

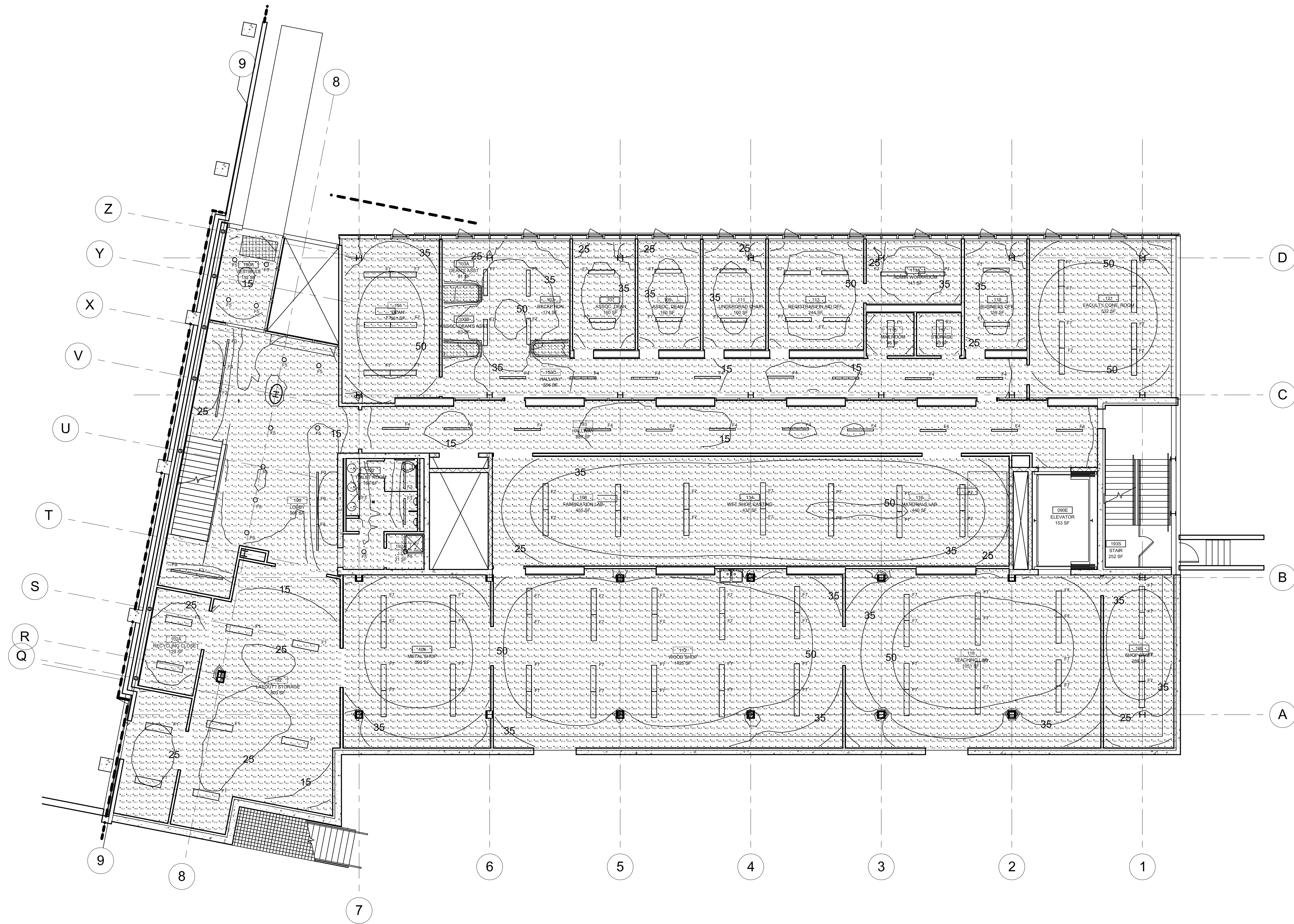


Thesis 2007

Pennsylvania State University
State College, PA 06802

KHA N DANG, LC INTERN
ARCHITECTURAL ENGINEERING
LIGHTING | ELECTRICAL option

T: 267 229 9370
E: knd107@gmail.com
W: www.arch.psu.edu/thesis/eporfolio2007/
porfolios/knd107
C: Dr. Richard Mistrick
C2: Ted Dannert



| Symbol | Label | Qty | Color/Number | Description | Notes | FR | Lumens | LF | Watts |
|----------|-------|-----|----------------------|--|---|--------------|--------|------|-------|
| [Symbol] | F1 | 11 | IPV-2-54TSHD | HEAVY DUTY PHARMACY INDUSTRIAL 2-PK #F2 CAMP TRUCK MOUNT SLOTTED REFLECTOR | TWO 36-WATT T8 18W/4-PIN/PCW/SCOTT RATED AND LAMP/REPLACEMENT | L70302-ES | 4650 | 570 | 122.0 |
| [Symbol] | F2 | 0 | ESDWB-04TSHD | 1-1/2" X 3-1/2" ALUMINUM ADJUSTABLE DIRECT INDIRECT | 2-24W/4-PIN/PCW/SCOTT RATED @ 3000 LUMENS | egm425-2as | 5000 | 5.61 | 125.4 |
| [Symbol] | F3 | 11 | LSWB-04TSHD | 2 1/2" X 3 1/2" RECESSED WALL DOWNLIGHT (NON-DIMMABLE) | 2-24W/4-PIN/PCW/SCOTT RATED @ 3000 LUMENS | hw4114-2as | 4650 | 5.61 | 99.9 |
| [Symbol] | F4 | 19 | LSWB-04TSHD | 2 1/2" X 3 1/2" RECESSED WALL DOWNLIGHT (NON-DIMMABLE) | 2-24W/4-PIN/PCW/SCOTT RATED @ 3000 LUMENS | LS2054-2as | 5000 | 5.61 | 99.1 |
| [Symbol] | F5 | 13 | LOF-30TFF-BRW-FM | 1/2" LENSED DOWNLIGHT WITH THERMAL PROTECTION | ONE 30-WATT COMPACT FLUORESCENT TUBE TUBE HORIZONTAL PMU | L75-14015-ES | 2400 | 5.75 | 34 |
| [Symbol] | F6 | 0 | MSHST-2-54TSHD-08-MS | FLUORESCENT RECESSED 700-LENG 2-PIN/4-PIN/PCW/SCOTT RATED AND LAMP/REPLACEMENT (50-SEC. WARM-UP) | TWO 36-WATT T8 18W/4-PIN/PCW/SCOTT RATED AND LAMP/REPLACEMENT (50-SEC. WARM-UP) | LF10300-2as | 4650 | 5.75 | 124 |
| [Symbol] | F7 | 72 | ESAMP-04TSHD | 2 1/2" X 3 1/2" ALUMINUM ADJUSTABLE DIRECT INDIRECT | 2-24W/4-PIN/PCW/SCOTT RATED @ 3000 LUMENS | egm425-2as | 5000 | 5.75 | 125.5 |
| [Symbol] | F8 | 18 | EMWB-04TSHD | 2 1/2" X 3 1/2" ALUMINUM ADJUSTABLE DIRECT INDIRECT | 2-24W/4-PIN/PCW/SCOTT RATED @ 3000 LUMENS EACH | egm425-2as | 5000 | 5.75 | 125.4 |

| Name | # Luminaires | Total Watts | Area | Density |
|-----------------------------|--------------|-------------|-----------|----------|
| 101 Dean Office | 6 | 723.0 W | 372.1 SF | 1.9 W/SF |
| 101 Mail Shop | 6 | 964.8 W | 596.0 SF | 1.6 W/SF |
| 102 Book Storage | 5 | 615.0 W | 804.0 SF | 0.8 W/SF |
| 102A Reception/Chair | 2 | 240.0 W | 120.0 SF | 2.0 W/SF |
| 102B Reception 2 | 2 | 240.0 W | 100.0 SF | 2.4 W/SF |
| 102C Reception 3 | 2 | 240.0 W | 88.0 SF | 2.7 W/SF |
| 102D Reception 4 | 2 | 240.0 W | 160.0 SF | 1.5 W/SF |
| 103 114-118 Labs | 14 | 1487.0 W | 1332.0 SF | 1.1 W/SF |
| 104 Assoc. Chair | 2 | 240.0 W | 103.0 SF | 2.3 W/SF |
| 111 Undergrad Chair | 2 | 240.0 W | 103.0 SF | 2.3 W/SF |
| 112 Wood Shop | 20 | 2412.0 W | 1442.0 SF | 1.7 W/SF |
| 113 Registrar/PA-Adm Office | 4 | 481.8 W | 240.9 SF | 2.0 W/SF |
| 113A Adm. Workroom | 2 | 240.9 W | 145.0 SF | 1.7 W/SF |
| 113 Mailroom | 1 | 120.4 W | 48.1 SF | 2.5 W/SF |
| 117 Storage | 1 | 120.4 W | 45.1 SF | 2.7 W/SF |
| 118 Teaching Lab | 12 | 1440.0 W | 1053.0 SF | 1.4 W/SF |
| 119 Business Office | 2 | 240.0 W | 102.0 SF | 2.3 W/SF |
| 121 Faculty Conference Room | 0 | 964.8 W | 522.0 SF | 1.8 W/SF |
| 124 Shop Staff | 4 | 480.0 W | 280.0 SF | 1.7 W/SF |
| 160 Lobby | 15 | 717.0 W | 607.2 SF | 1.2 W/SF |
| 160A Vestibule | 4 | 190.0 W | 124.1 SF | 1.5 W/SF |
| 162 Teller Room | 4 | 213.7 W | 150.0 SF | 1.4 W/SF |
| 162A Janitor Closet | 1 | 34.0 W | 31.1 SF | 1.1 W/SF |
| 163 Hallway | 11 | 651.1 W | 875.0 SF | 0.7 W/SF |

| Description | Symbol | Avg | Max | Min | Min/Max | Avg/Min |
|-----------------------------|--------|-------|-------|-------|---------|---------|
| 101 Dean Office | + | 45.1% | 60.8% | 4.4% | 13.2% | 10.2% |
| 101 Mail Shop | + | 44.8% | 61.4% | 0.0% | N/A | N/A |
| 102 Book Storage | + | 35.7% | 37.4% | 0.0% | N/A | N/A |
| 102A Reception/Chair | + | 25.0% | 31.0% | 20.2% | 1.0% | 1.2% |
| 102B Reception 2 | + | 22.8% | 27.8% | 7.3% | 3.0% | 3.7% |
| 102C Reception 3 | + | 23.0% | 22.0% | 0.0% | N/A | N/A |
| 102D Reception 4 | + | 31.0% | 41.8% | 0.0% | 4.0% | 3.0% |
| 103 114-118 Labs | + | 36.7% | 60.8% | 15.5% | 3.0% | 2.0% |
| 104 Assoc. Chair | + | 22.0% | 41.5% | 21.4% | 2.0% | 1.0% |
| 111 Undergrad Chair | + | 31.0% | 41.1% | 6.8% | 4.2% | 3.0% |
| 112 Wood Shop | + | 34.5% | 74.9% | 0.0% | N/A | N/A |
| 113 Registrar/PA-Adm Office | + | 51.1% | 69.7% | 31.8% | 2.0% | 1.6% |
| 113A Adm. Workroom | + | 33.4% | 44.0% | 13.0% | 3.4% | 2.6% |
| 113 Mailroom | + | 26.9% | 30.8% | 23.0% | 1.2% | 1.2% |
| 117 Storage | + | 27.7% | 31.0% | 24.0% | 1.2% | 1.2% |
| 118 Teaching Lab | + | 43.3% | 63.0% | 0.0% | N/A | N/A |
| 119 Business Office | + | 39.8% | 39.8% | 6.7% | 4.6% | 3.6% |
| 121 Faculty Conference Room | + | 48.6% | 64.4% | 13.8% | 4.0% | 3.0% |
| 124 Shop Staff | + | 32.6% | 45.6% | 13.3% | 3.4% | 2.6% |
| 160 Lobby | + | 34.2% | 37.4% | 0.0% | N/A | N/A |
| 160A Vestibule | + | 17.8% | 15.4% | 2.9% | 5.0% | 4.1% |
| 162 Teller Room | + | 17.8% | 23.8% | 2.6% | 5.0% | 4.6% |
| 162A Janitor Closet | + | 5.2% | 5.0% | 4.2% | 1.4% | 1.2% |
| 163 Hallway | + | 14.1% | 16.4% | 7.6% | 2.0% | 1.6% |
| DESKS | + | 36.8% | 49.8% | 29.4% | 1.7% | 1.3% |
| DESKS | + | 34.9% | 47.1% | 24.8% | 1.6% | 1.4% |
| DESKS | + | 42.8% | 53.2% | 26.6% | 1.6% | 1.6% |

NOTE:

While great efforts have been taken to provide accurate and complete information, please be aware that the information contained herein is considered a work-in-progress for this thesis project. Modifications and changes related to the original building designs and construction methodologies for this senior thesis project are solely the interpretation of Kha N. Dang. Changes and discrepancies in no way imply that the original design contained errors or was flawed. Differing assumptions, code references, requirements, and methodologies have been incorporated into this thesis project; therefore, investigation results may vary from the original design.

NOT FOR CONSTRUCTION

| NO. | DATE | REVISION |
|-----|------|----------|
| | | |
| | | |
| | | |

PROJECT NAME
**THESIS 2007
SCULPTURE BIDG
PARKING GARAGE**

BUILDING NAME & ADDRESS

PROJECT NUMBER

DRAWING TITLE
FIRST FLOOR PHOTOMETRIC DATA

SCALE
1"=1'-0"

DRAWN BY
KND

CAD FILENAME
XX-XX-XXX.DWG

DATE
03/11/07

DRAWING NUMBER

EL-201